



National Underground Railroad®
FREEDOM CENTER



Visual Welcome Guide

Before our visit to the Freedom Center, we need to learn the rules. Here is what we need to remember:

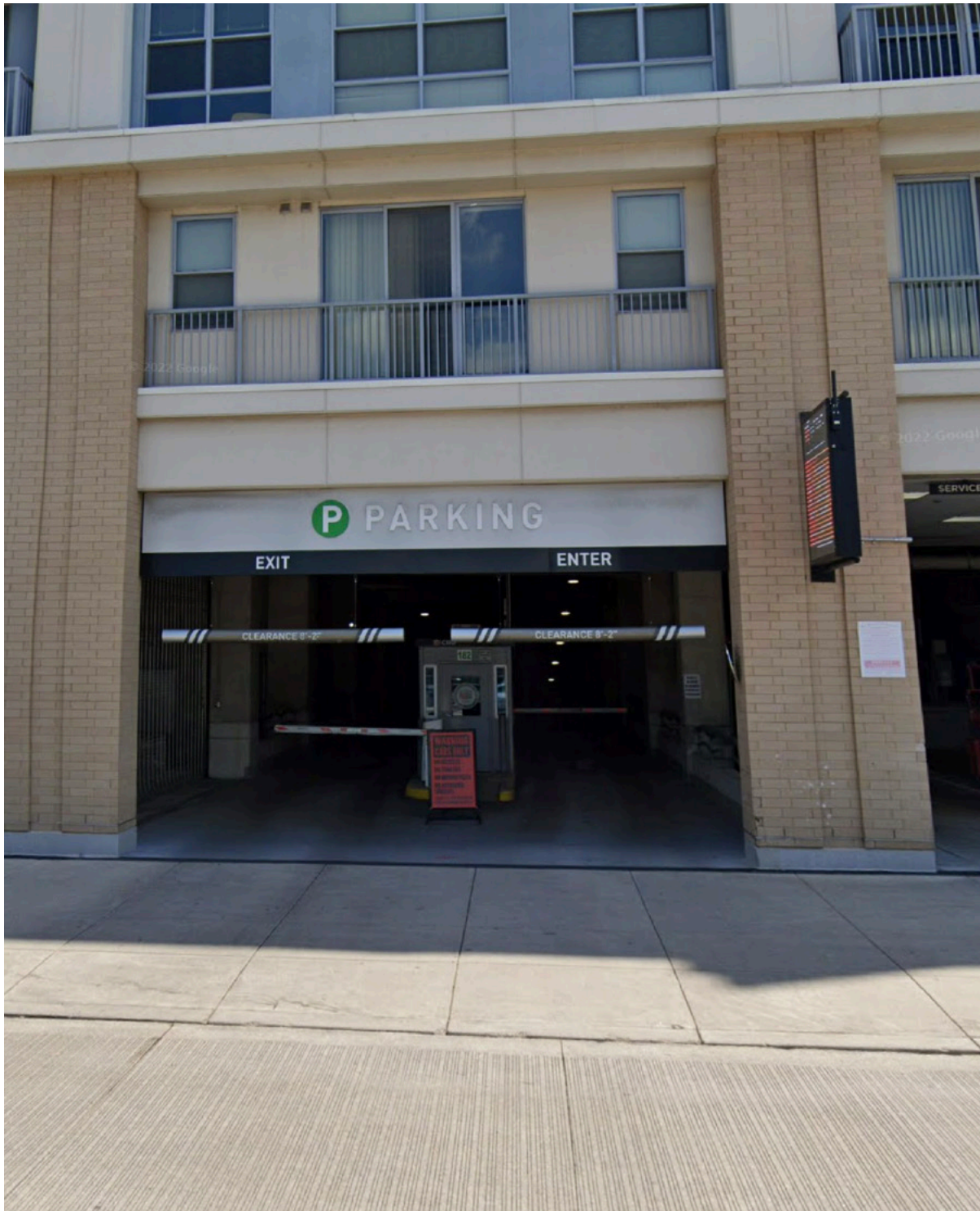
We do not take food or drinks inside the galleries. A water bottle is okay.

Stay with our group.

Use a quiet voice. We do not yell inside the museum.

Walk slowly. We do not run inside the museum.

Turn off our camera flash. We are allowed to take photos, but flash photography is not allowed.



The closest parking is in Central Riverfront Garage. The best garage entrance is located at 182 Race Street.

Here are some alternative entrances:

- 171 Joe Nuxhall Way
- 102 West Pete Rose Way



Park in the green section.
Ride the elevators up to Plaza Level (PL).



Follow the signs to the main entrance of the museum.



You've arrived at our main entrance! Our handicap accessible entry door is located to the right of the revolving doors.



Wave your hand across the black box to open the doors automatically.



You made it to the lobby!
Walk to the end of the glass
wall and turn right.



You may notice a uniformed police officer at a small desk. You can say hi to them!



Check in at our front desk.
This is where you will purchase
your tickets.



One of our specialists will help you get tickets.



They will also show you a map of the museum and suggest where you can go.



If you need a restroom, you can find them on the 1st floor and 3rd floor.



Ride the elevators up to the galleries.



Explore the exhibits and enjoy your visit!